

AH200 / AH280



The AH200 - AH280 aluminum filter return grilles consist of an exhaust grille hinged to a frame.

MATERIAL AND FINISH

- Return grille in natural anodized aluminum
- Frame in extruded anodized aluminum.

APPLICATION

- AH200 - AH280 suitable for wall or duct mounting
- AH200/N - AH280/N suitable for ceiling installation with hidden screw closing.

FASTENING

With non-visible screws on the frame.

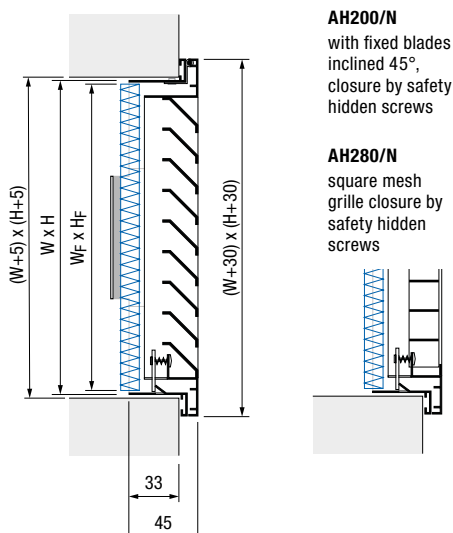
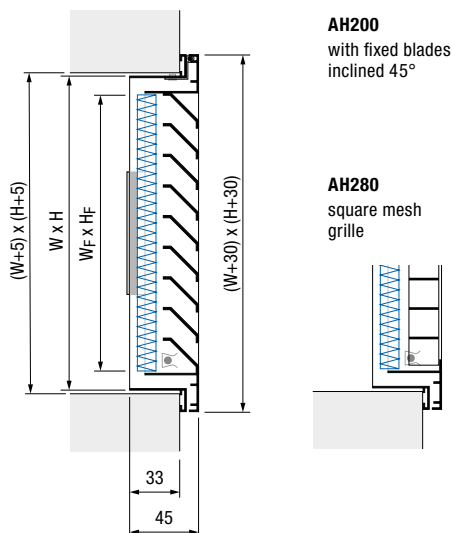
VERSIONS

- AH200 with fixed blades inclined 45°, pitch 20 mm, with mechanical closure by spring
- AH280 square mesh with mechanical closure by spring.
- AH200/N with fixed blades inclined 45°, pitch 20 mm, with mechanical closure by safety hidden screws
- AH280/N square mesh with mechanical closure by safety hidden screws

ACCESSORIES

- PFC filter thickness 12 mm, filtration class G2.

DIMENSIONS



PRICES

Model	AH200	AH280	Accessories	AH200/N	AH280/N
			PFC		
400 x 200					
500 x 200					
600 x 200					
800 x 200					
300 x 300					
400 x 300					
500 x 300					
600 x 300					
800 x 300					
400 x 400					
500 x 400					
600 x 400					
800 x 400					
500 x 500					
600 x 500					
570 x 570*					
600 x 600					
800 x 600					

* Overall dimensions 595 x 595 mm (suitable for flush false ceiling installation)

PFC filter dimensions $W_f \times H_f$

- for versions AH200 - AH280: (W - 25 mm) x (H - 25 mm);
- for versions AH200/N - AH280/N: (W - 5 mm) x (H - 5 mm)

AH200 / AH280

QUICK SELECTION

	Q _{min}	Q _{max}
Pressure drop [Pa]	5	< 25
Noise level L _{WA} [dB(A)]	< 25	< 40

