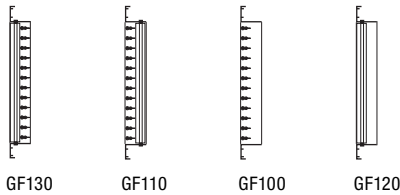
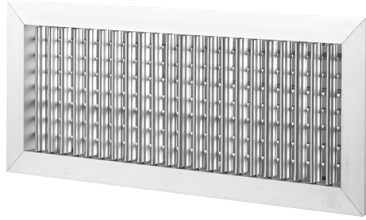
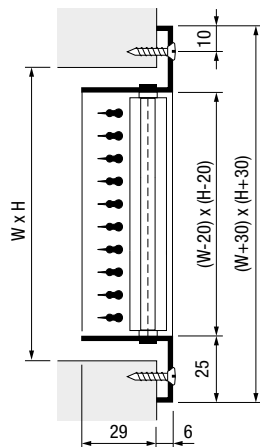


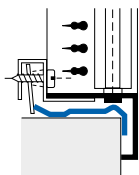
# GF130



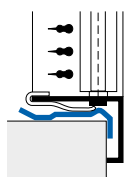
## DIMENSIONS AND FASTENING SYSTEM



type GF130  
fixing with screws



type GE  
fixing with hidden screws  
and counter-frame



type GD  
clips and counter-frame  
fixing

The GF130 supply grilles in painted steel consist of a steel sheet frame and blades profiled in single or double rows.

### MATERIAL AND FINISH

- Grille in painted steel sheet, white RAL 9010
- Damper in galvanized steel
- Plenum in galvanized steel.

### APPLICATION

- Suitable for wall mounting or on rectangular visible ducts
- summer  $\Delta T$  up to -10 K and winter up to +15 K.

### FASTENING

- GF... with visible screws
- GD... with clips
- GE... with non-visible screws (hidden screws).

### VERSIONS

- G...130 double row 1st vertical and 2nd horizontal.
- G...110 double row 1st horizontal and 2nd vertical.
- G...100 single horizontal row.
- G...120 single vertical row.

### ACCESSORIES

- GT007 Regulating damper with opposed multiple blades.
- GR001 counter-frame in galvanized steel for fastening with clips or concealed screws (GD..., GE...).
- BPI Distribution plenum with pre-arrangement for multiple side, top or bottom spigots. (See page 183)

## PRICES

Model	GF130	GF110	GF100	GF120	Accessories	
					GT007	GR001
200 x 100	•				•	•
300 x 100	•				•	•
400 x 100	•				•	•
500 x 100	•				•	•
300 x 150	•				•	•
400 x 150	•				•	•
500 x 150	•				•	•
600 x 150	•				•	•
800 x 150	•				•	•
400 x 200	•				•	•
500 x 200	•				•	•
600 x 200	•				•	•
800 x 200						•
1000 x 200						•
500 x 300	•				•	•
600 x 300	•				•	•
800 x 300						•
1000 x 300						•

- Products in stock

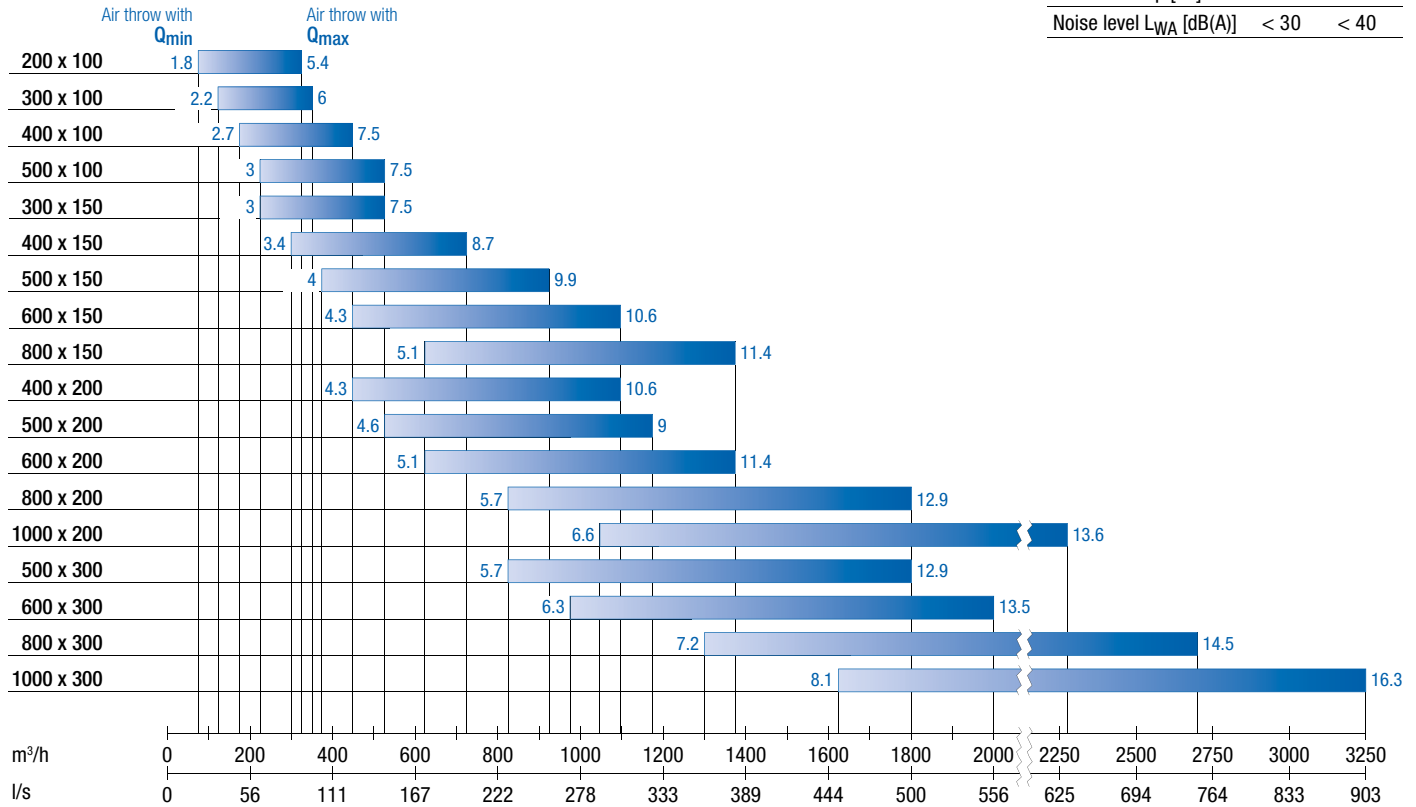
Maximum possible size 2000 x 1200

For fixing system GD and GE type UPON REQUEST.

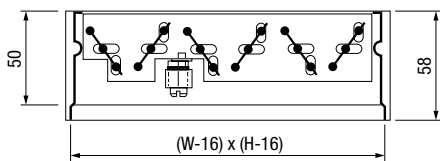
# GF130

**QUICK SELECTION**

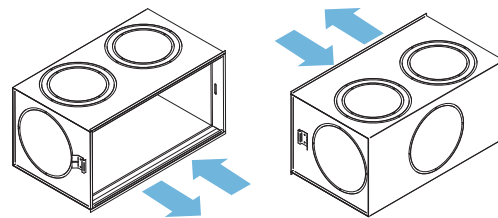
	Q <sub>min</sub>	Q <sub>max</sub>
Pressure drop [Pa]	< 5	< 25
Noise level L <sub>WA</sub> [dB(A)]	< 30	< 40



**ACCESSORIES**



**GT007**  
Damper in galvanized steel



**BPI**  
Multi-connection plenum - see page 183

**HOW TO ORDER**

**GF 1 3 0**

**FASTENING**

- D clips fixing
- E fastening with hidden screws
- F fastening with visible screws

**VERSIONS**

- 0 single horizontal row
- 1 double row, 1st horiz. 2nd vert.
- 2 single vertical row
- 3 double row 1st vert. 1st horiz.

**ACCESSORIES**

- 0 without regulating damper
- 7 with regulating damper mod. **GT 007**