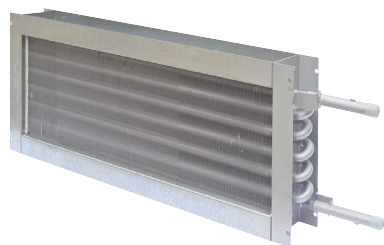


RSVBH / RSVQH / RSVCH



Post-heating batteries are used to increase the temperature of the air leaving the boxes or the air flow regulators in order to satisfy the request to control the temperature coming from room probes. They are available in the hot water version.

MATERIAL AND FINISH

Aluminum blades, th. 0.12 mm, casing in galvanized steel, threaded connections

CONSTRUCTION

2 rows with copper pipes 16.0 x 0.35 mm

VERSIONS

- 40 mm tube pitch (low water temperature)
 - 60 mm tube pitch (high temperature water)
- Pressure test at 2 MPa (20 bar)

MODELS

- RSVBH battery for box single duct mod. RSVB
- RSVQH battery for regulator rectangular mod. RSVQ
- RSVCH battery for regulator circular RSVQ