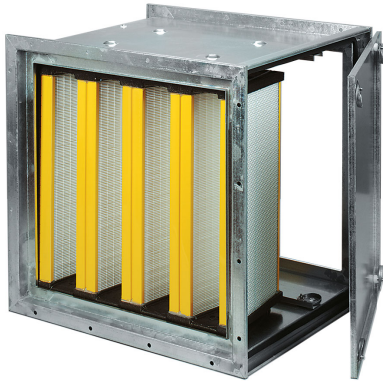


MULTIMOD



Multimod housings are modular and versatile systems that fit in cell filters, with soft and rigid pockets, and activated carbon filters mod. CAB. Installation is directly in the duct with airflow horizontal. Supplied with access door and locking eccentric cams. The filter is locked in place by a double eccentric lever. Perforated flanges are on the air inlet and outlet sides.

MATERIAL AND FINISH

- Structure in galvanized steel sheet.
- Locking: double AISI 304 stainless steel eccentric lever.
- Closed cell expanded neoprene gasket on locking stop.
- Perforated flanges: air inlet/outlet sides.

APPLICATION

- Single or multiple filtration stages to get filtration levels up to ePM₁ according to ISO 16890

VERSIONS

- AISI 304 stainless steel.
- ATEX II 2 GD T6 version.

ACCESSORIES

- D: pressure probes

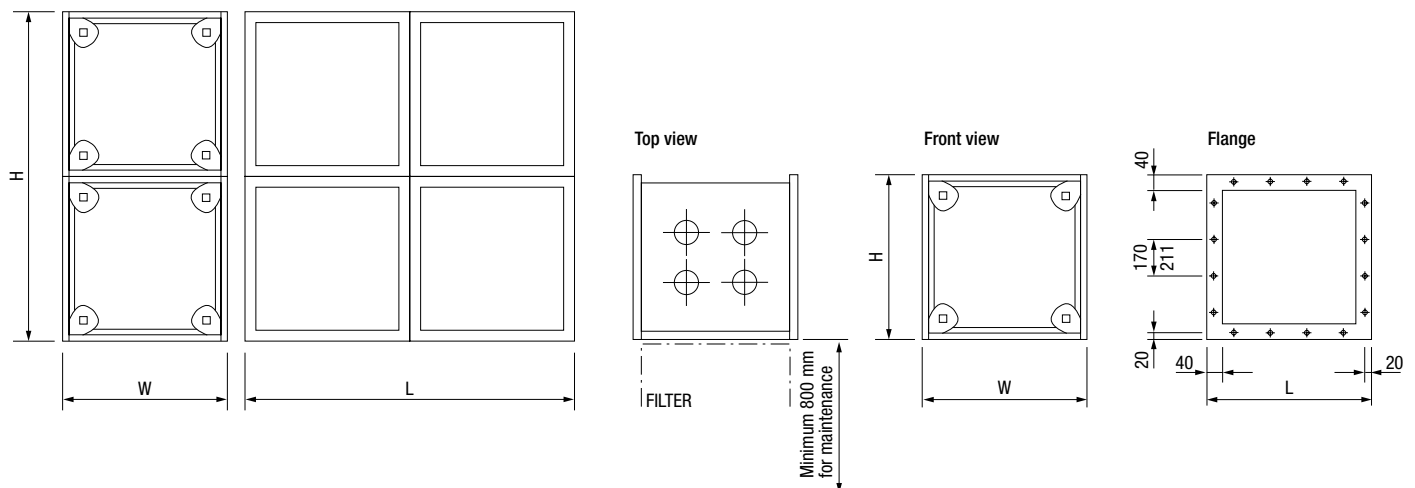
DIMENSIONS AND TECHNICAL DATA

Code	Dimensions [mm]			Pitch holes [mm]	Holes no	Weight [Kg]	MD €
	L	H	W				
MD 52	685	380	585	170/211	12	17	
MD 5	685	685	585	170	16	22	
2 MD 5	685	1370	585	170	32	46	
3 MD 5	685	2055	585	170	48	70	
MD 8	990	685	585	170/211	28	28	
MD 5 BP	1294	685	585	170	32	27	
2 MD 5 BP	1294	1370	585	170	64	58	
3 MD 5 BP	1294	2055	585	170	96	90	

- Products in stock

N.B. In order to define the arrangement, the relevant filter model should be specified.

2 MD 5BP system



MULTIMOD

DIMENSIONS

Multimod arrangements codification "MD 5"

Arrangement	PREFILTER Dimensions [mm]			FILTER Dimensions [mm]			Type of FILTER
	L	H	W	L	H	W	
A	–	–	–	610	610	150	high efficiency SIGMA series
B	610	610	48	610	610	150	
C	–	–	–	610	610	292	
D	610	610	48	610	610	292	
E	610	610	98	610	610	292	
F	–	–	–	595	595	292/635	rigid or soft pocket
G	595	595	23	595	595	292/635	
H	595	595	48	595	595	292	
I	595	595	98	595	595	292	
L	–	–	–	600	600	300/400	activated carbon cartridge filters
M	610	610	48	600	600	300/400	

DIMENSIONS

Multimod arrangements codification "MD 52"

Arrangement	PREFILTER Dimensions [mm]			FILTER Dimensions [mm]			Type of FILTER
	L	H	W	L	H	W	
A	–	–	–	305	610	150	high efficiency SIGMA series
B	305	610	48	305	610	150	
C	–	–	–	305	610	292	
D	305	610	48	305	610	292	
E	305	610	98	305	610	292	
F	–	–	–	287	595	292/635	rigid or soft pocket
G	287	595	23	287	595	292/635	
H	287	595	48	287	595	292	
I	287	595	98	287	595	292	
L	–	–	–	300	600	300/400	activated carbon cartridge filters
M	305	610	48	300	600	300/400	