

CB / CA

	CB	CA
EN 1822:2019 classification	H13	H14
MPPS efficiency	99,95%	99,995%
Suggested final pressure drop	400 Pa	400 Pa
Maximum pressure drop	600 Pa	600 Pa
Maximum operating temperature	70 °C	70 °C
Maximum relative humidity	100%	100%

Cartridge HEPA filters available in the entire range of HEPA efficiency classes. Each filter is produced and separately tested in a clean environment, in compliance with the EN 1822:2019.

MATERIAL AND FINISH

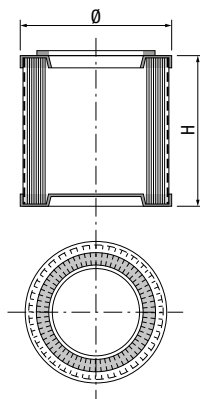
- Base plates in anodized aluminum.
- Medium in fire-proof micro-fibre glass.
- Protective grid in anodized aluminum.
- Hot-melt separators.
- Bicomponent polyurethane sealant
- Single-piece neoprene gasket.

APPLICATION

- Suitable in terminal filter housings for Operating Rooms.
- Isolators and glove-boxes; (see dedicated documentation).
- As the last stage in vacuum cleaners for clean rooms and industrial environments.
- Custom-made solutions.

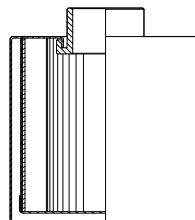
VERSIONS

- ATEX II 2 GD T6.
- GBC with single or double threaded spigot in anodized aluminum.

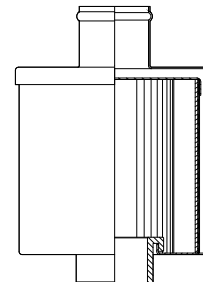
**DIMENSIONS AND TECHNICAL DATA**

Code	Dimensions [mm]		Nominal air flow rate Q			Initial pressure drop [Pa]		CB	CA
	Ø	H	[m³/h]	[l/s]	[ft³/min]	CB	CA	€	€
90	175	180	90	25	53	200	270		
130	175	180	130	36	77	200	270		
170	175	230	170	47	100	200	270		

- Products in stock

GBC Glove Box Cartridge version

Single connection



Double connection