

**Engineering**

**SMBA**  
**Surface Mounted Blast Attenuators**



**SagiCofim**  
Ecoefficiency for Indoor Air Quality



SMBA



The blast attenuators SMBA are stationary louvered type attenuators to be installed for the protection of HVAC air intake and outlet openings of the specified buildings subjected to a blast design overpressure lower than 0.07 barg (7 kPag), where the blast protection valves would not however close due to insufficient overpressure.

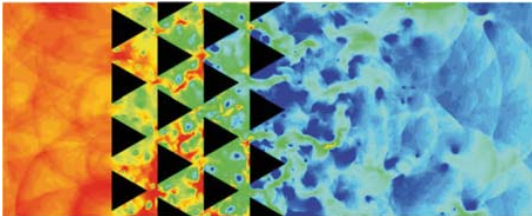
Blast attenuators can be designed to be installed flush with the wall or projecting from it; in this second installation typology, blast attenuators are self-draining of the sand trapped by the blades.

The blast attenuators construction consist of two, or more, opposite rows of V-shape blades, welded in a rectangular frame, to allow a proper absorption of the wave impact. Attenuators are heavy-gauge galvanized steel construction, factory-painted (unless otherwise specified).

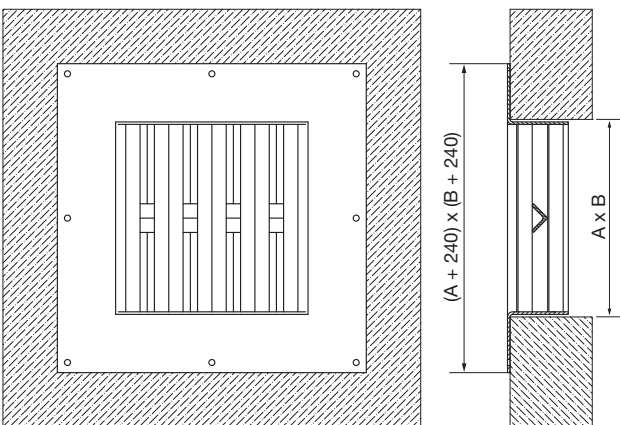
The blast attenuators are designed to provide a tortuous flow path, in order to create a significant resistance to the incoming blast wave, so to reduce the downstream overpressure. The attenuators are suitable for both vertical and horizontal installation.

Blast attenuators are normally sized so that the airflow speed reaches from 2 to 4 m/s with a consequent pressure drop from 70 to 200 Pa.

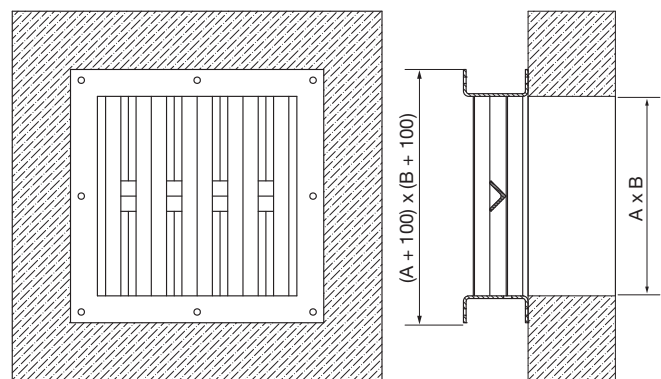
The expected residual downstream pressure is around 50% of the incoming pressure wave. Special sizes are available on request.



Typical installation



Blast attenuators flush installation



Blast attenuators wall installation

**SagiCofim spa**  
 Comfort Filtration Engineering  
 via Firenze 1  
 20063 Cernusco sul Naviglio  
 Milan Italy  
 tel +39 02 929021 r.a.  
 fax +39 02 92902300  
 info@sagicofim.com  
 www.sagicofim.com



Sagicofim S.p.A. reserves the right to change or modify product features and specifications at any moment, without prior notice.