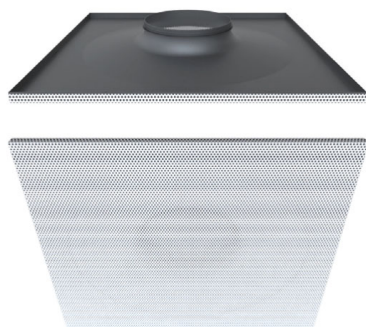


# DG300



DG300 supply diffusers with perforated panel, featuring a uniform 360° radial discharge with a reinforced Coanda effect and moderate induction.

#### MATERIAL AND FINISH

- Diffuser in painted steel, white RAL 9010
- Rear plate with special profile in painted steel, black RAL 9005
- Plenum in galvanized steel sheet
- Insulation, when required, is in melamin with th. 6 mm. **Fire reaction M1 (NFP92-507), V-0 (UL94).**

#### APPLICATION

- Suitable fore rear connection or side connection with plenum
- Suitable for installation height between 2.7 and 4 m
- summer  $\Delta T$  up to -10 K and winter up to +15 K.

#### FASTENING

With plenum fastened to the ceiling by hanging. Lying flat on the false ceiling frame in T configuration and fed from the back.

#### VERSIONS

- DG330S diffuser (26% plate perforation) with plenum having side collar
- DG330SD diffuser (26% plate perforation) with plenum having side collar and regulating damper
- DG330SG diffuser (26% plate perforation) with insulated plenum having side collar
- DG330SGD diffuser (26% plate perforation) with insulated plenum having side collar and regulating damper
- DG330T diffuser (26% plate perforation) with rear collar
- DG360T diffuser (51% plate perforation) with rear collar.

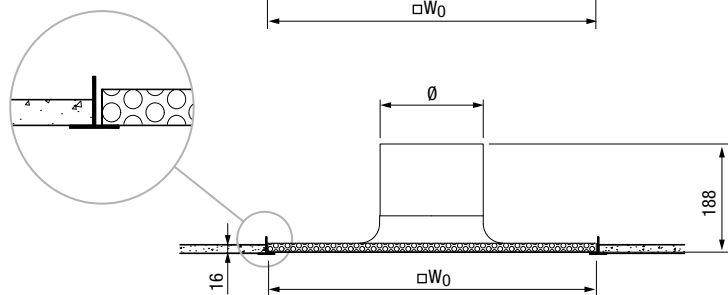
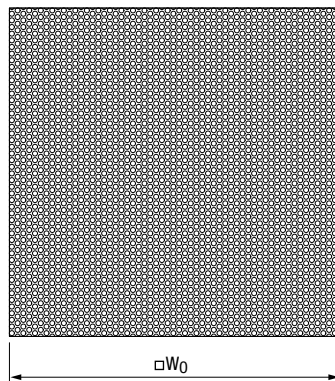
#### PRICES

Model	DG330S	DG330SD	DG330SG	DG330SGD
100				
125				
160				
200				

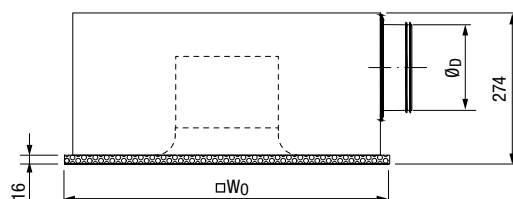
Model	DG330T	DG360T
100		
125		
160		
200		

# DG300

## DIMENSIONS



DG330T / 360T



DG330S / DG330SD / DG330SG / DG330SGD

Model	Dimensions [mm]		
	$\square W_0$	$\emptyset$	$\emptyset_D$
100	594	98	78
125	594	123	98
160	594	158	123
200	594	198	158

### HOW TO ORDER

DG 3 6 0 - S G D 0594

330 plate with 26% triangular perforation  
360 plate with 51% square perforation

#### PLENUMS

S plenum with side collar  
T with rear collar

- non-insulated plenum  
G insulated plenum (only for S version)

#### REGULATING DAMPER

- without regulating damper  
D with regulating damper (only for S version)

#### SIZE $W_0$

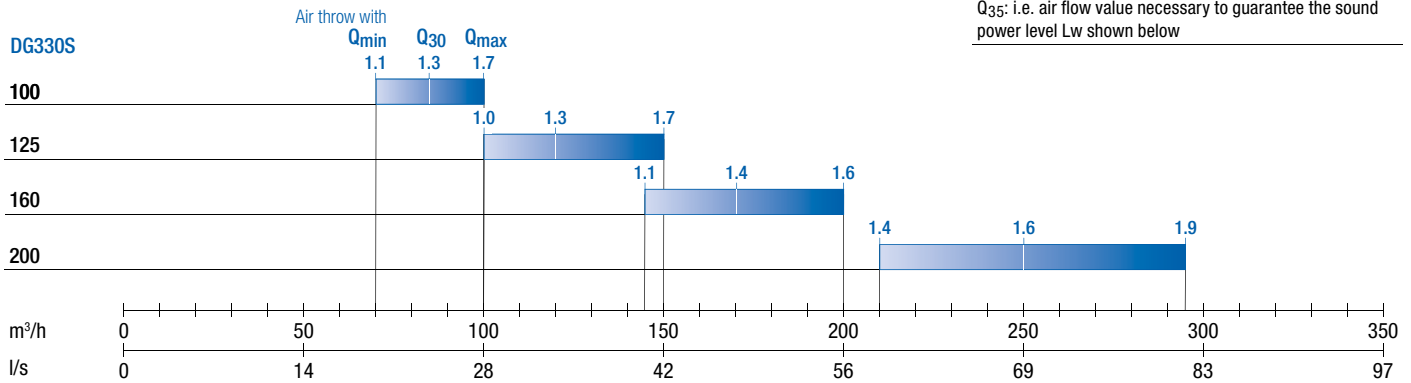
0594 Overall size in mm

# DG300

**QUICK SELECTION**

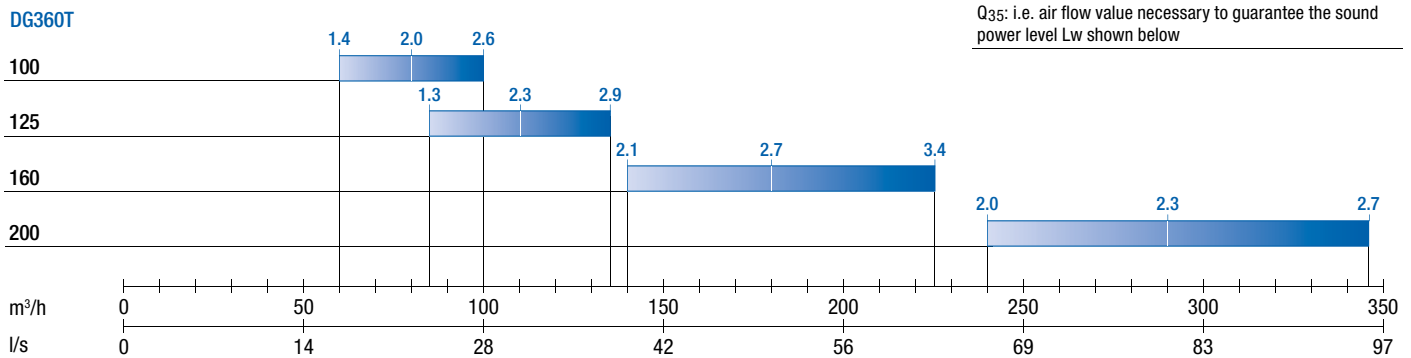
DG330S	Q <sub>min</sub>	Q <sub>35</sub>	Q <sub>max</sub>
Pressure drop [Pa]	10-25	15-30	20-50
Noise level L <sub>WA</sub> [dB(A)]	25	30	35

Q<sub>35</sub>: i.e. air flow value necessary to guarantee the sound power level L<sub>w</sub> shown below



DG360T	Q <sub>min</sub>	Q <sub>35</sub>	Q <sub>max</sub>
Pressure drop [Pa]	15-30	15-45	20-60
Noise level L <sub>WA</sub> [dB(A)]	25	30	35

Q<sub>35</sub>: i.e. air flow value necessary to guarantee the sound power level L<sub>w</sub> shown below



DG330T	Q <sub>min</sub>	Q <sub>35</sub>	Q <sub>max</sub>
Pressure drop [Pa]	< 10	10	< 15
Noise level L <sub>WA</sub> [dB(A)]	25	30	35

Q<sub>35</sub>: i.e. air flow value necessary to guarantee the sound power level L<sub>w</sub> shown below

