

# MPX



MPX micro spot diffusers meet many functional and architectural needs owing to their distribution nozzles manually adjustable in all directions.

#### MATERIAL AND FINISH

- Diffuser plate in painted aluminum, white RAL 9010
- White PP plastic spot diffusers
- Black spot diffusers and plate in other RAL... colours upon request
- Plenum in galvanized sheet
- When required, insulation in chemically reticulate closed cell polyethylene foam with th. 6 mm **Fire reaction B-s1-d0 according to EN13501-1.**

#### APPLICATION

Wall or ceiling mounting.

#### FASTENING

- MPX diffuser with plate fastened to the plenum by concealed screws
- MPX/C diffuser with diffuser quickly fastened to and/or disassembled from

the plenum using special springs.

#### VERSIONS

- MPX diffuser with fastening by concealed screws
- MPX/C diffuser with quick spring fastening

#### ACCESSORIES

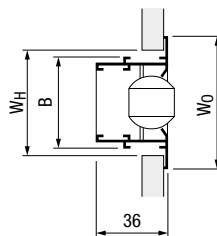
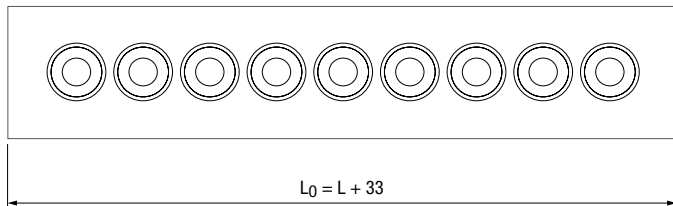
- BPS-MPS plenum with side collar
- BPS/D-MPX plenum with side collar and regulating damper
- BPSI/D-MPX plenum with insulated side collar and regulating damper
- BPS-MPX/C plenum with side collar for spring fastening
- BPS/D-MPX/C plenum with side collar and regulating damper for spring fastening
- BPSI/D-MPX/C plenum with insulated side collar and regulating damper for spring fastening
- GR005-MPX assembly bridge for false ceiling installation.

#### PRICES

| Model    | MPX | MPX/C | Accessories |           |            |           |             |              |           |
|----------|-----|-------|-------------|-----------|------------|-----------|-------------|--------------|-----------|
|          |     |       | BPS-MPX     | BPS/D-MPX | BPSI/D-MPX | BPS-MPX/C | BPS/D-MPX/C | BPSI/D-MPX/C | GR005-MPX |
| 1 x 500  |     |       |             |           |            |           |             |              |           |
| 1 x 558  |     |       |             |           |            |           |             |              |           |
| 1 x 600  |     |       |             |           |            |           |             |              |           |
| 1 x 700  |     |       |             |           |            |           |             |              |           |
| 1 x 800  |     |       |             |           |            |           |             |              |           |
| 1 x 900  |     |       |             |           |            |           |             |              |           |
| 1 x 1000 |     |       |             |           |            |           |             |              |           |
| 1 x 1100 |     |       |             |           |            |           |             |              |           |
| 1 x 1200 |     |       |             |           |            |           |             |              |           |
| 1 x 1300 |     |       |             |           |            |           |             |              |           |
| 1 x 1400 |     |       |             |           |            |           |             |              |           |
| 1 x 1500 |     |       |             |           |            |           |             |              |           |
| 1 x 1600 |     |       |             |           |            |           |             |              |           |
| 1 x 1700 |     |       |             |           |            |           |             |              |           |
| 1 x 1800 |     |       |             |           |            |           |             |              |           |
| 1 x 1900 |     |       |             |           |            |           |             |              |           |
| 1 x 2000 |     |       |             |           |            |           |             |              |           |
| 2 x 500  |     |       |             |           |            |           |             |              |           |
| 2 x 558  |     |       |             |           |            |           |             |              |           |
| 2 x 600  |     |       |             |           |            |           |             |              |           |
| 2 x 700  |     |       |             |           |            |           |             |              |           |
| 2 x 800  |     |       |             |           |            |           |             |              |           |
| 2 x 900  |     |       |             |           |            |           |             |              |           |
| 2 x 1000 |     |       |             |           |            |           |             |              |           |
| 2 x 1100 |     |       |             |           |            |           |             |              |           |
| 2 x 1200 |     |       |             |           |            |           |             |              |           |
| 2 x 1300 |     |       |             |           |            |           |             |              |           |
| 2 x 1400 |     |       |             |           |            |           |             |              |           |
| 2 x 1500 |     |       |             |           |            |           |             |              |           |
| 2 x 1600 |     |       |             |           |            |           |             |              |           |
| 2 x 1700 |     |       |             |           |            |           |             |              |           |
| 2 x 1800 |     |       |             |           |            |           |             |              |           |
| 2 x 1900 |     |       |             |           |            |           |             |              |           |
| 2 x 2000 |     |       |             |           |            |           |             |              |           |

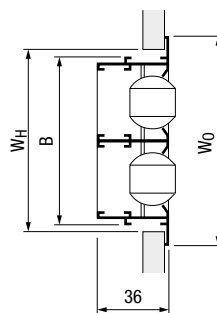
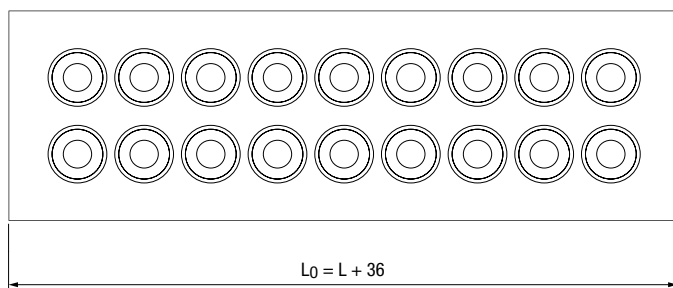
# MPX

## DIMENSIONS

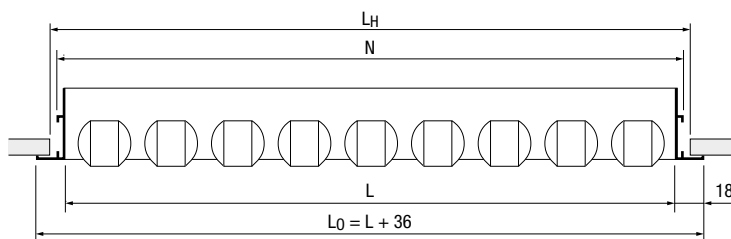


MPX 1 row

|       | Dimensions [mm] |                |    |
|-------|-----------------|----------------|----|
|       | W <sub>0</sub>  | W <sub>H</sub> | B  |
| 1 Row | 68              | 55             | 47 |
| 2 Row | 107             | 95             | 86 |



MPX 2 rows



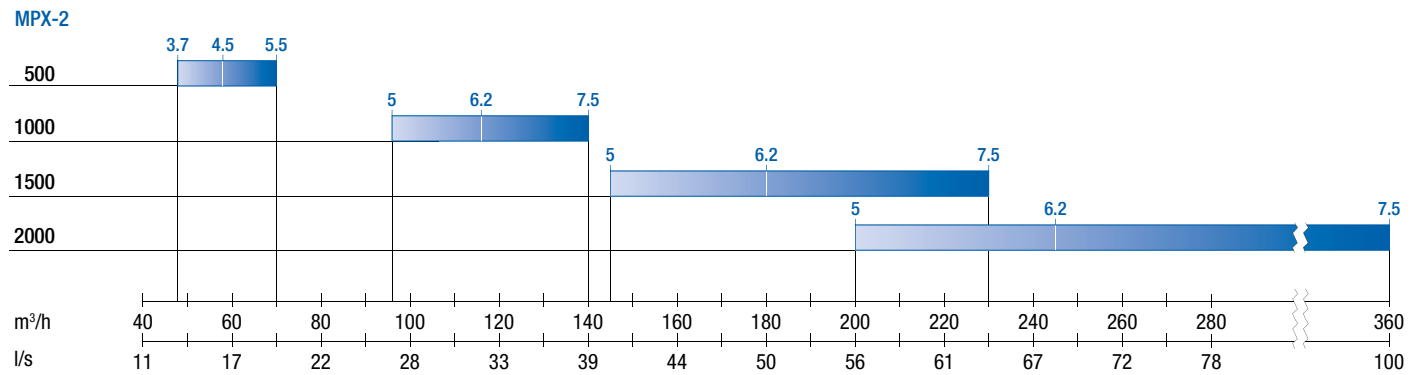
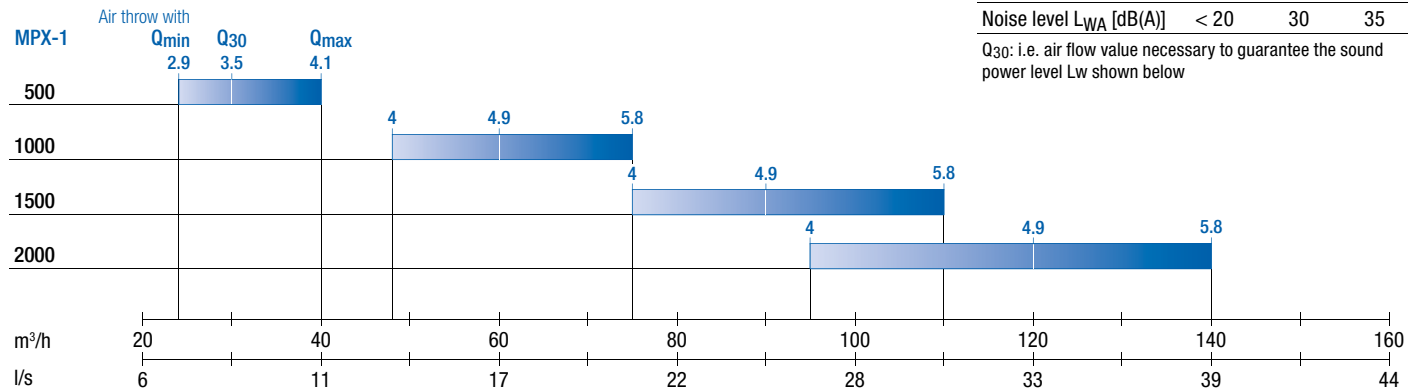
| L    | Dimensions [mm] |      |                |
|------|-----------------|------|----------------|
|      | L <sub>0</sub>  | N    | L <sub>H</sub> |
| 500  | 536             | 507  | 516            |
| 1000 | 1036            | 1007 | 1016           |
| 1200 | 1236            | 1207 | 1216           |
| 1500 | 1536            | 1507 | 1516           |
| 2000 | 2036            | 2007 | 2016           |

# MPX

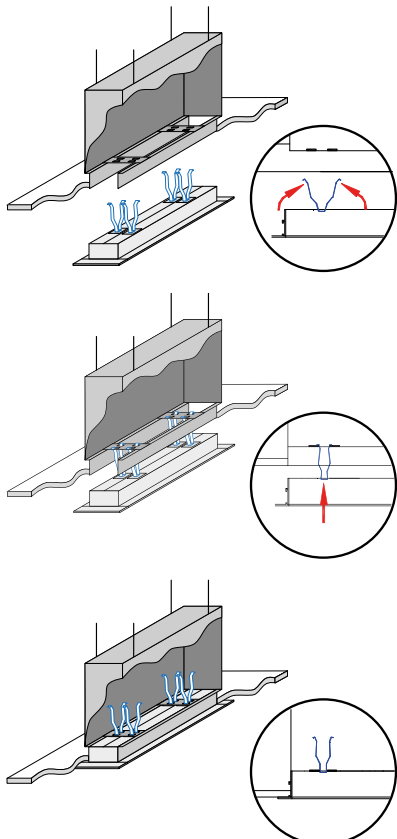
## QUICK SELECTION FOR WALL MOUNTING

|                              | $Q_{min}$ | $Q_{30}$ | $Q_{max}$ |
|------------------------------|-----------|----------|-----------|
| Pressure drop [Pa]           | < 10      | < 20     | < 35      |
| Noise level $L_{WA}$ [dB(A)] | < 20      | 30       | 35        |

$Q_{30}$ : i.e. air flow value necessary to guarantee the sound power level  $L_w$  shown below

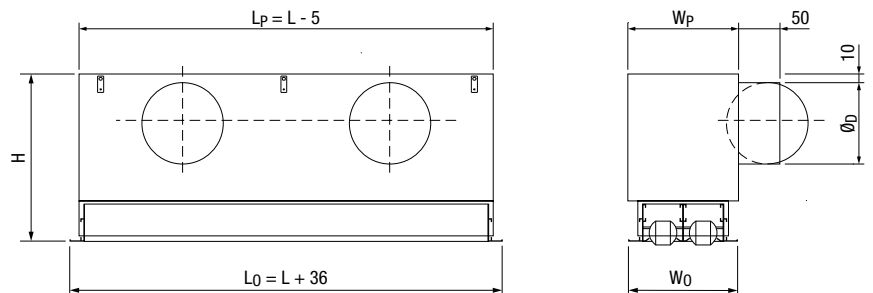


## FASTENING



## ACCESSORIES

|       | Dimensions [mm] |                 |                 |                 |               |                 | $W_p$ | $W_0$ |
|-------|-----------------|-----------------|-----------------|-----------------|---------------|-----------------|-------|-------|
|       | $0.5 < L < 1.2$ |                 | $1.3 < L < 1.5$ |                 | $1.6 < L < 2$ |                 |       |       |
|       | H               | $\varnothing_D$ | H               | $\varnothing_D$ | H             | $\varnothing_D$ |       |       |
| MPX 1 | 256             | 1/158           | 256             | 1/158           | 256           | 2/158           | 69    | 68    |
| MPX 2 | 256             | 1/158           | 256             | 2/158           | 256           | 2/158           | 108   | 107   |



### BPS-D-MPX Plenums

Quick fastening system with MPX-C diffuser