

# WX100



WX100 swirl diffusers have adjustable baffles radially disposed, producing two different air throws: an internal or external vortex, or a vertical throw. The intense vortex allows a high induction with reduced throws, offering a low temperature gradient in the occupied zone.

### MATERIAL AND FINISH

- Plate in painted steel, white RAL9010
- The adjustable baffles are in black nylon
- Plenum in steel sheet
- ISOBOX-R series pyramid plenum in polystyrene foam
- Insulation, when required, is in polyethylene with th. 6 mm, **certified according to Euroclass B-s2-d0**.

### APPLICATION

- Suitable for systems: VAV and CAV
- Suitable for installation height between 2.7 and 4 m
- Summer  $\Delta T$  up to -10K and winter up to +15K.

### FASTENING

Diffuser connected to the plenum by central screw.

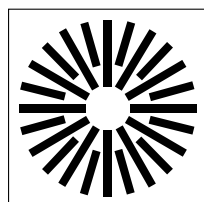
Plenum fastened to the ceiling by hanging.

### ACCESSORIES

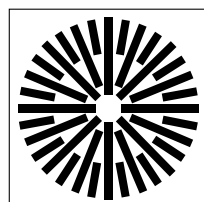
- BOX-WT101S plenum with side collar without insulation, with regulating damper and equalizer
- BOX-WT101T plenum with rear collar without insulation, with regulating damper and equalizer
- BOX-WT101SI insulated plenum with side collar, with regulating damper and equalizer
- BOX-WT101TI insulated plenum with rear collar, with regulating damper and equalizer

- External insulation (UPON REQUEST)

- ISOBOX-R polystyrene distribution plenum with side collar in polypropylene, with regulating damper and complete with brackets for ceiling assembly. (See page 90)



24 slots



32 slots

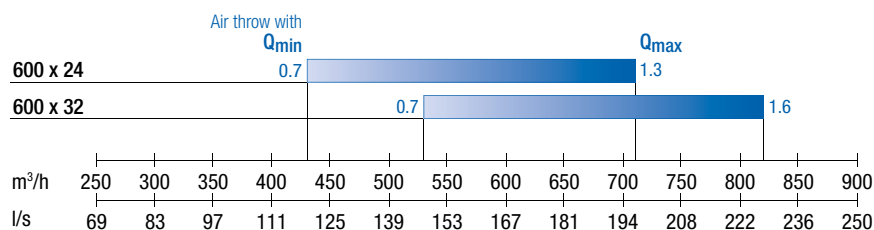
### PRICES

Model	WX100	Accessories				
		BOX-WT101T	BOX-WT101TI	BOX-WT101S	BOX-WT101SI	ISOBOX-R
	€	€	€	€	€	€
600 x 24	•			•	•	•
600 x 32	•			•	•	•

- Products in stock

### QUICK SELECTION

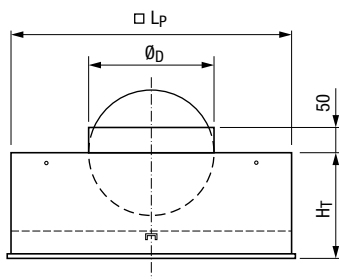
	$Q_{min}$	$Q_{max}$
Pressure drop [Pa]	10	< 30
Noise level $L_{WA}$ [dB(A)]	< 30	< 40



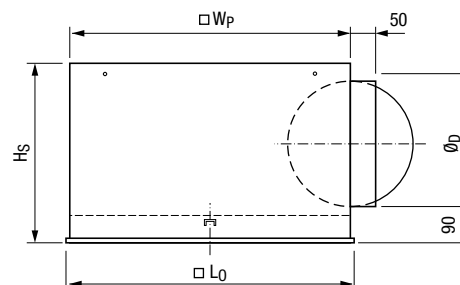
# WX100

## ACCESSORIES

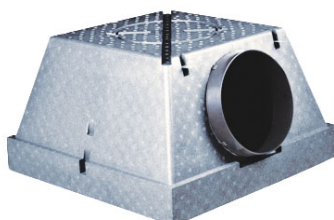
Model	Dimensions [mm]				
	□L <sub>0</sub>	□W <sub>P</sub>	H <sub>S</sub>	H <sub>T</sub>	∅ <sub>D</sub>
600 x 24	595	555	355	200	248
600 x 32	595	555	355	200	248



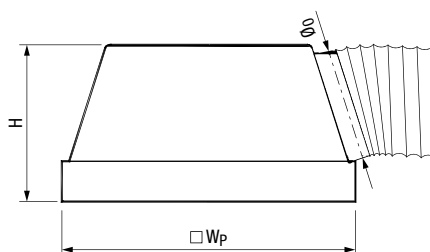
**WX100 + BOX-WT...T**  
Plenums



**WX100 + BOX-WT...S**  
Plenums



**ISOBOX-R plenums**  
Distribution plenum



Model	Dimensions [mm]		
	□W <sub>P</sub>	H	∅ <sub>0</sub>
600 - Ø200	590	300	198
600 - Ø250	590	350	248